 paulwallace

Oliver Court, , SG12 0PP |
Offers in Excess of £260,000 | Leasehold

Oliver Court, , SG12 0PP

Conveniently located just 2 miles from Hertford Town Centre and 3 miles from Ware Town Centre, this spacious split level two double bedroom apartment offers a tranquil retreat amidst picturesque countryside. Boasting a generously sized living space, this property benefits from a 150-year lease and reasonable service charges, making it an ideal purchase for first time buyers, downsizers or as an investment opportunity. The apartment features a superbly appointed kitchen and bathroom, as well as allocated and visitor parking for convenience. With the added bonus of double glazed windows, an impressive entrance hall, and access to well-maintained communal grounds, this property offers a harmonious blend of comfort and practicality.

Surrounded by open countryside and adjacent to playing fields, this idyllic setting provides a peaceful escape from the hustle and bustle of town living, while still being within easy reach of local amenities. Whether enjoying the spacious interior, the refreshing views, or the serene surroundings, this charming apartment presents an ideal opportunity for those seeking both comfort and convenience.

Key features

- Idyllic setting amidst open countryside
- Spacious split level layout with two double bedrooms
- 150-year lease and reasonable service charges
- Superbly appointed kitchen and bathroom
- Allocated and visitor parking
- Double glazed windows for energy efficiency
- Impressive entrance hall
- Well-maintained communal grounds for relaxation



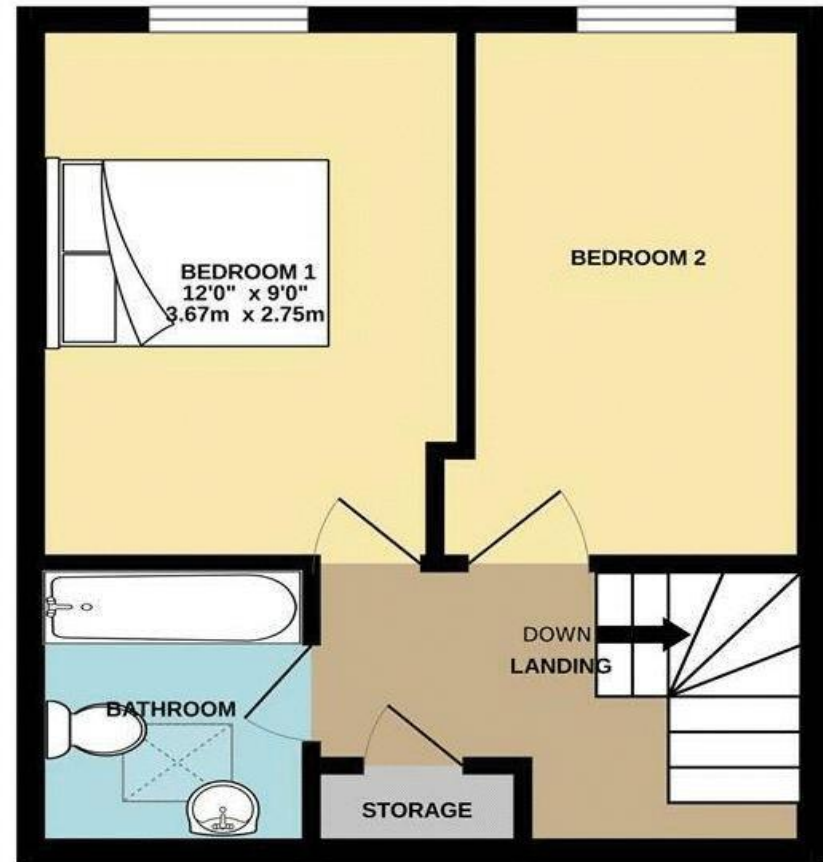
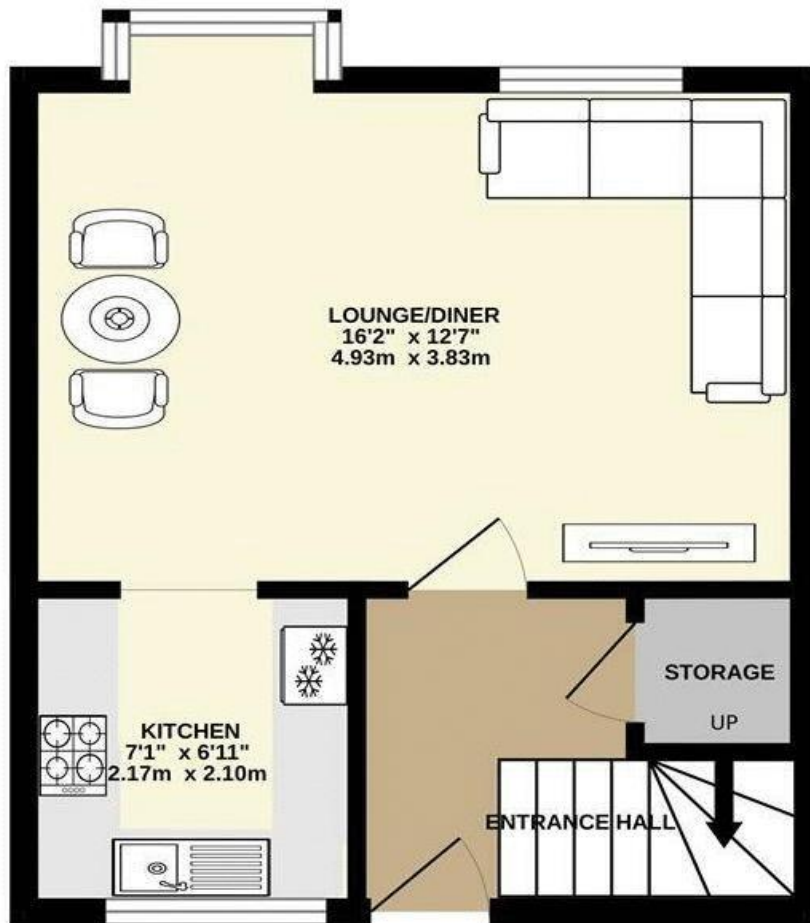
 paulwallace
estate agents

hoddesdon@paulwallace.co.uk

01992 466471







TOTAL FLOOR AREA : 613sq.ft. (56.9 sq.m.) approx.

Whilst every attempt has been made to ensure the accuracy of the floorplan contained here, measurements of doors, windows, rooms and any other items are approximate and no responsibility is taken for any error, omission or mis-statement. This plan is for illustrative purposes only and should be used as such by any prospective purchaser. The services, systems and appliances shown have not been tested and no guarantee as to their operability or efficiency can be given.
 Made with Metropix ©2024



 paulwallace



 paulwallace



 paulwallace



 paulwallace



Registered Address: Unit 3 The Brookfield Centre, Cheshunt, Herts, EN8 0NN Company Registration Number: OC414280 | VAT Number: 276958046©2022 Paul Wallace Group LLP trading as Paul Wallace Estate Agents



Paul Wallace Estate Agents

70 High Street
Hoddesdon
Hertfordshire
EN11 8ET

 01992 466471

 hoddesdon@paulwallace.co.uk

 www.paulwallace.co.uk



Opening Times

Mon	9am to 6.30pm
Tues	9am to 6.30pm
Wed	9am to 6.30pm
Thurs	9am to 6.30pm
Fri	9am to 6.30pm
Sat	9am to 5.00pm
Sun	Closed



Agents Note: Whilst every care has been taken to prepare these sales particulars, they are for guidance purposes only. All measurements are approximate and are for general guidance purposes only and whilst every care has been taken to ensure their accuracy, they should not be relied upon. Potential buyers are advised to recheck the measurements.